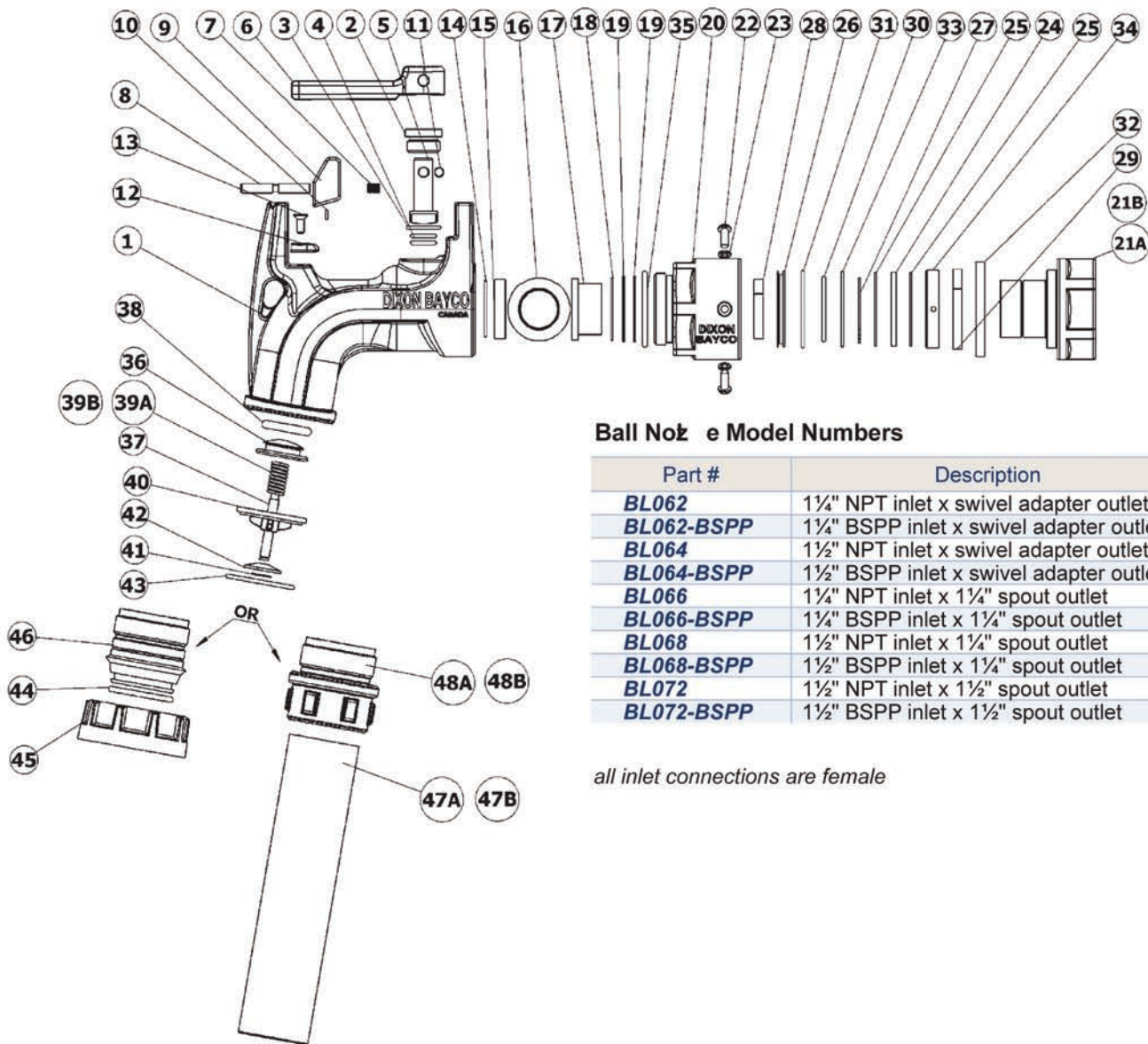


# Fuel Nozzles

## BL Ball Nozzles



**Ball Nozzle Model Numbers**

Part #	Description
<b>BL062</b>	1 1/4" NPT inlet x swivel adapter outlet
<b>BL062-BSPP</b>	1 1/4" BSPP inlet x swivel adapter outlet
<b>BL064</b>	1 1/2" NPT inlet x swivel adapter outlet
<b>BL064-BSPP</b>	1 1/2" BSPP inlet x swivel adapter outlet
<b>BL066</b>	1 1/4" NPT inlet x 1 1/4" spout outlet
<b>BL066-BSPP</b>	1 1/4" BSPP inlet x 1 1/4" spout outlet
<b>BL068</b>	1 1/2" NPT inlet x 1 1/4" spout outlet
<b>BL068-BSPP</b>	1 1/2" BSPP inlet x 1 1/4" spout outlet
<b>BL072</b>	1 1/2" NPT inlet x 1 1/2" spout outlet
<b>BL072-BSPP</b>	1 1/2" BSPP inlet x 1 1/2" spout outlet

*all inlet connections are female*

Petroleum Replacement Parts

### Repair Kits

Part #	Description	Includes Item #
<b>SWMF-RK1</b>	inlet swivel grease nipple kit (optional)	not illustrated
<b>SWMF-RK2</b>	inlet swivel seal and wear kit	26, 28, 29, 30, 31, 32
<b>SWMF-RK3</b>	complete inlet swivel rebuild kit	22, 23, 24, 25, 26, 27, 28, 29, 30, 31, 32, 33, 34
<b>SWMF-RK4</b>	1 1/2" FNPT replacement inlet swivel	20, 21B, 22(3), 23(3), 24, 25(2), 26, 27, 28, 29, 30, 31, 32, 33, 34, 35
<b>SWMF-RK5</b>	1 1/4" FNPT replacement inlet swivel	20, 21A, 22(3), 23(3), 24, 25(2), 26, 27, 28, 29, 30, 31, 32, 33, 34, 35
<b>SWMF-RK6</b>	1 1/2" BSPP replacement inlet swivel	20, 21C, 22(3), 23(3), 24, 25(2), 26, 27, 28, 29, 30, 31, 32, 33, 34, 35
<b>BL005</b>	replacement swivel outlet (BL062, BL064)	43, 44, 45, 46
<b>BL-RK4</b>	ball valve shaft seal kit	2, 3, 4, 5
<b>BL-RK10</b>	complete ball nozzle seal kit	3, 4, 14, 15, 17, 35, 38, 43, 44
<b>BL-RK11</b>	optional check valve 5 PSI spring kit	39B, 43
<b>BL-RK12</b>	standard check valve 3 PSI cartridge kit	36, 37, 38, 39a, 40, 41, 42, 43
<b>BL-RK13</b>	replacement trigger kit	6, 7, 8, 9, 10, 11, 12, 13(2)

Product instruction sheets and technical data can be viewed on our website at [dixonbayco.com](http://dixonbayco.com) by selecting the "Resources" menu

# Fuel Nozzles

## BL Ball Nozzles

### Bill of Materials

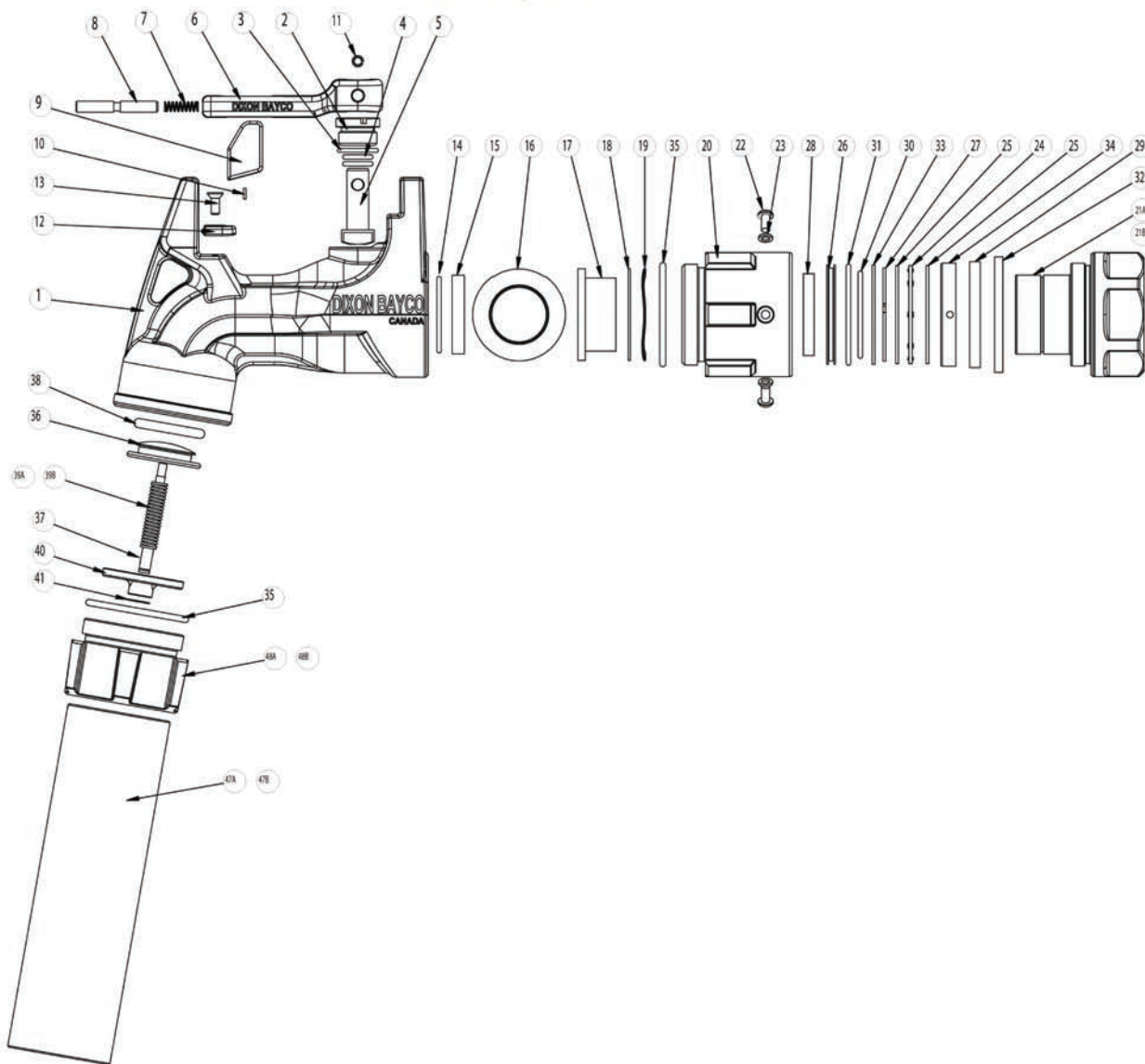
Item #	Description	Part #	Qty
1	body	---	1
2	bronze guide shaft	use kit <b>BL-RK4</b>	1
3	O-ring	use kit <b>BL-RK4</b> or <b>BL-RK10</b>	1
4	O-ring	use kit <b>BL-RK4</b> or <b>BL-RK10</b>	2
5	shaft lever	use kit <b>BL-RK4</b>	1
6	lever	use kit <b>BL-RK13</b>	1
7	compression spring	use kit <b>BL-RK13</b>	1
8	shaft latch	use kit <b>BL-RK13</b>	1
9	latch	use kit <b>BL-RK13</b>	1
10	screw	use kit <b>BL-RK13</b>	1
11	pin	use kit <b>BL-RK13</b>	1
12	lever plate	use kit <b>BL-RK13</b>	1
13	screw	use kit <b>BL-RK13</b>	2
14	O-ring	use kit <b>BL-RK10</b>	1
15	seal	use kit <b>BL-RK10</b>	1
16	ball	<b>BL062-2</b>	1
17	ball seat	use kit <b>BL-RK10</b>	1
18	washer	<b>111719</b>	1
19	wave spring	<b>110902</b>	2
20	swivel body	use kit <b>SWMF-RK4, SWMF-RK5</b> or <b>SWMF-RK6</b>	1
21A	swivel inlet 1¼" NPT	use kit <b>SWMF-RK5</b>	1
21B	swivel inlet 1½" NPT	use kit <b>SWMF-RK4</b>	1
21C	swivel inlet 1½" BSPP	use kit <b>SWMF-RK6</b>	1
22	screw	use kit <b>SWMF-RK3, SWMF-RK4, SWMF-RK5</b> or <b>SWMF-RK6</b>	3
23	lock washer	use kit <b>SWMF-RK3, SWMF-RK4, SWMF-RK5</b> or <b>SWMF-RK6</b>	3
24	thrust bearing	use kit <b>SWMF-RK3, SWMF-RK4, SWMF-RK5</b> or <b>SWMF-RK6</b>	1
25	thrust washer	use kit <b>SWMF-RK3, SWMF-RK4, SWMF-RK5</b> or <b>SWMF-RK6</b>	2
26	O-ring holder	use kit <b>SWMF-RK2, SWMF-RK3, SWMF-RK4, SWMF-RK5</b> or <b>SWMF-RK6</b>	1
27	retaining ring	use kit <b>SWMF-RK3, SWMF-RK4, SWMF-RK5</b> or <b>SWMF-RK6</b>	1
28	font bearing	use kit <b>SWMF-RK2, SWMF-RK3, SWMF-RK4, SWMF-RK5</b> or <b>SWMF-RK6</b>	1
29	rear bearing	use kit <b>SWMF-RK2, SWMF-RK3, SWMF-RK4, SWMF-RK5</b> or <b>SWMF-RK6</b>	1
30	O-ring	use kit <b>SWMF-RK2, SWMF-RK3, SWMF-RK4, SWMF-RK5</b> or <b>SWMF-RK6</b>	1
31	O-ring	use kit <b>SWMF-RK2, SWMF-RK3, SWMF-RK4, SWMF-RK5</b> or <b>SWMF-RK6</b>	1
32	dust seal	use kit <b>SWMF-RK2, SWMF-RK3, SWMF-RK4, SWMF-RK5</b> or <b>SWMF-RK6</b>	1
33	support washer	use kit <b>SWMF-RK3, SWMF-RK4, SWMF-RK5</b> or <b>SWMF-RK6</b>	1
34	support ring	use kit <b>SWMF-RK3, SWMF-RK4, SWMF-RK5</b> or <b>SWMF-RK6</b>	1
35	O-ring	use kit <b>SWMF-RK4, SWMF-RK5</b> or <b>SWMF-RK6</b>	1
36	poppet	use kit <b>BL-RK12</b>	1
37	stem	use kit <b>BL-RK12</b>	1
38	O-ring	use kit <b>BL-RK10</b> or <b>BL-RK12</b>	1
39A	compression spring (3 PSI)	use kit <b>BL-RK12</b>	1
39B	compression spring (5 PSI)	use kit <b>BL-RK11</b>	1
40	bridge	use kit <b>BL-RK12</b>	1
41	retaining ring	use kit <b>BL-RK12</b>	1
42	washer	use kit <b>BL005, BL-RK10, BL-RK11</b> or <b>BL-RK12</b>	1
43	O-ring	use kit <b>BL005, BL-RK10</b> or <b>BL-RK12</b>	1
44	O-ring	use kit <b>BL005</b>	1
45	swivel nut	use kit <b>BL005</b>	1
46	swivel adapter	use kit <b>BL005</b>	1
47A	spout 1¼"	<b>1143A</b>	1
47B	spout 1½"	<b>1125A</b>	1
48A	spout adapter 1¼" NPT	<b>341703</b>	1
48B	spout adapter 1½" NPT	<b>BL007</b>	1

Product instruction sheets and technical data can be viewed on our website at [dixonbayco.com](http://dixonbayco.com) by selecting the "Resources" menu

# Fuel Nozzles

## BL Super Ball Nozzles

BL918, BL919 & BL920



Petroleum Replacement Parts

### Repair Kits

Part #	Description	Includes Item #
<b><i>SWMF-RK1</i></b>	inlet swivel grease nipple kit (optional)	not illustrated
<b><i>SWMF-RK22</i></b>	inlet swivel seal and wear kit	26, 28, 29, 30, 31, 32
<b><i>SWMF-RK32</i></b>	complete inlet swivel rebuild kit	22, 23, 24, 25, 26, 27, 28, 29, 30, 31, 32, 33, 34
<b><i>SWMF-RK42</i></b>	2" FNPT replacement inlet swivel	20, 21A, 22(3), 23(3), 24, 25(2), 26, 27, 28, 29, 30, 31, 32, 33, 34, 35
<b><i>SWMF-RK52</i></b>	1½" FNPT replacement inlet swivel	20, 21B, 22(3), 23(3), 24, 25(2), 26, 27, 28, 29, 30, 31, 32, 33, 34, 35
<b><i>BL-RK42</i></b>	ball valve shaft seal kit	2, 3, 4, 5
<b><i>BL-RK102</i></b>	complete ball nozzle seal kit	3, 4, 14, 15, 17, 35, 38
<b><i>BL-RK112</i></b>	optional check valve 5 PSI spring kit	35, 39B
<b><i>BL-RK122</i></b>	standard check valve 3 PSI cartridge kit	35, 36, 37, 38, 39a, 40, 41
<b><i>BL-RK13</i></b>	replacement trigger kit	6, 7, 8, 9, 10, 11, 12, 13(2)

Product instruction sheets and technical data can be viewed on our website at [dixonbayco.com](http://dixonbayco.com) by selecting the "Resources" menu

# Fuel Nozzles

## BL Super Ball Nozzles

### Bill of Materials

Item #	Description	Part #	Qty
1	body	---	1
2	bronze guide shaft	use kit <b>BL-RK42</b>	1
3	O-ring	use kit <b>BL-RK42</b> or <b>BL-RK102</b> (includes item 35)	2
4	O-ring	use kit <b>BL-RK42</b> or <b>BL-RK102</b> (includes item 35)	1
5	shaft lever	use kit <b>BL-RK42</b>	1
6	lever	use kit <b>BL-RK13</b>	1
7	compression spring	use kit <b>BL-RK13</b>	1
8	shaft latch	use kit <b>BL-RK13</b>	1
9	latch	use kit <b>BL-RK13</b>	1
10	screw	use kit <b>BL-RK13</b>	1
11	pin	use kit <b>BL-RK13</b>	1
12	lever plate	use kit <b>BL-RK13</b>	1
13	screw	use kit <b>BL-RK13</b>	2
14	O-ring	use kit <b>BL-RK102</b>	1
15	seal	use kit <b>BL-RK102</b>	1
16	ball	<b>112091</b>	1
17	ball seat	use kit <b>BL-RK102</b>	1
18	washer	<b>112092</b>	1
19	wave spring	<b>112090</b>	2
20	swivel body	use kit <b>SWMF-RK42</b> or <b>SWMF-RK52</b>	1
21A/B	swivel inlet	use kit <b>SWMF-RK42</b> or <b>SWMF-RK52</b>	1
22	screw	use kit <b>SWMF-RK42</b> or <b>SWMF-RK52</b>	3
23	lock washer	use kit <b>SWMF-RK42</b> or <b>SWMF-RK52</b>	3
24	thrust bearing	use kit <b>SWMF-RK42</b> or <b>SWMF-RK52</b>	1
25	thrust washer	use kit <b>SWMF-RK42</b> or <b>SWMF-RK52</b>	2
26	O-ring holder	use kit <b>SWMF-RK22</b> , <b>SWMF-RK32</b> , <b>SWMF-RK42</b> or <b>SWMF-RK52</b>	1
27	retaining ring	use kit <b>SWMF-RK32</b> (includes items 22,23, 24, 25, 33, 34), <b>SWMF-RK42</b> or <b>SWMF-RK52</b>	1
28	front bearing	use kit <b>SWMF-RK22</b> , <b>SWMF-RK32</b> , <b>SWMF-RK42</b> or <b>SWMF-RK52</b>	1
29	rear bearing	use kit <b>SWMF-RK22</b> , <b>SWMF-RK32</b> , <b>SWMF-RK42</b> or <b>SWMF-RK52</b>	1
30	O-ring	use kit <b>SWMF-RK22</b> , <b>SWMF-RK32</b> , <b>SWMF-RK42</b> or <b>SWMF-RK52</b>	1
31	O-ring	use kit <b>SWMF-RK22</b> , <b>SWMF-RK32</b> , <b>SWMF-RK42</b> or <b>SWMF-RK52</b>	1
32	dust seal	use kit <b>SWMF-RK22</b> , <b>SWMF-RK32</b> , <b>SWMF-RK42</b> or <b>SWMF-RK52</b>	1
33	support washer	use kit <b>SWMF-RK42</b> or <b>SWMF-RK52</b>	1
34	support ring	use kit <b>SWMF-RK42</b> or <b>SWMF-RK52</b>	1
35	O-ring	use kit <b>SWMF-RK42</b> or <b>SWMF-RK52</b>	1
36	poppet	use kit <b>BL-RK122</b>	1
37	stem	use kit <b>BL-RK122</b>	1
38	O-ring	use kit <b>BL-RK102</b> (includes item 35) or <b>BL-RK122</b>	1
39A/B	compression spring	use kit <b>BL-RK112</b> or <b>BL-RK122</b>	1
40	bridge	use kit <b>BL-RK122</b>	1
41	retaining ring	use kit <b>BL-RK122</b>	1
47A/47B	spout	<b>391137</b> (2") / <b>1125A</b> (1½")	1
48A/48B	spout adapter	<b>341780</b> (NPT) / <b>341781</b> (BSPP)	1