

Fuel Tanker Loading and Unloading

TTMA Flanged Sight Flow Indicators

Features & Benefits:	<ul style="list-style-type: none"> • Due to the proprietary blending of petroleum products, Dixon™ recommends that the thermoplastic tubing and the gaskets be immersion tested in the product to be handled to ensure compatibility (not compatible with crude oil). • Durable cast aluminum housing replaces competitions all acrylic sight glass commonly found on tank trucks • Allows for visual identification of the fuel grade prior to opening the valve • Works with tank truck flanged butterfly valves found on gasoline trucks • Low cost sight glass tube can be easily replaced • Rated to 150 PSI
---------------------------------	---




5200-SFI shown mounted on petroleum tank



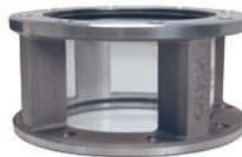
5200-SFI

Part #	Description	Fuel Compatibility
5200-SFI-3	3" TTMA flange sight flow, 1¼" width, 3½" inside diameter	Gasoline and diesel, up to E100 and B100 biofuels
5200C-SFI-3 ¹	3" TTMA flange sight flow, 1¼" width, 3½" inside diameter, stainless retain ring	Gasoline and diesel, up to E100 and B100 biofuels, crude oil
5200-SFI	4" TTMA flange sight flow, 1¼" width, 4¾" inside diameter	Gasoline and diesel, up to E100 and B100 biofuels
5200C-SFI ¹	4" TTMA flange sight flow, 1¼" width, 4¾" inside diameter, stainless retain ring	Gasoline and diesel, up to E100 and B100 biofuels, crude oil

¹ Are compatible with crude oil.

Note: Maximum flange bolt torque is 200 in-lb (inch pounds) 

Features & Benefits:	<ul style="list-style-type: none"> • Due to the proprietary blending of petroleum products, Dixon™ recommends that the thermoplastic tubing and the gaskets be immersion tested in the product to be handled to ensure compatibility (not compatible with crude oil). • Allows for visual identification of the fuel grade prior to opening the valve • Works with tank truck flanged butterfly valves found on gasoline trucks • Larger ID 4¾" flow indicator allows tank truck flanged butterfly valves to connect to either end of the indicator • Rated to 150 PSI
---------------------------------	---



Part #	Description	Fuel Compatibility
5201-SFI	4" TTMA flange sight flow, 3¼" width, 4¾" inside diameter	Gasoline and diesel, up to E100 and B100 biofuels
5201-SFI-3	3" TTMA flange sight flow, 3¼" width, 3½" inside diameter	Gasoline and diesel, up to E100 and B100 biofuels

Note: Maximum flange bolt torque is 200 in-lb (inch pounds) 