

Swing Check Valves

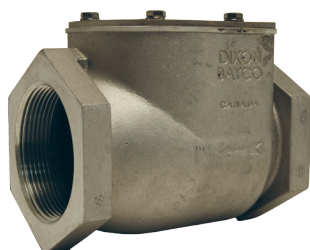
Bayco High Flow Series

Dry Bulk Products

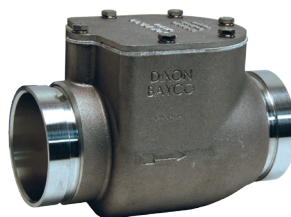
Application:	Often used on both the blower and trailer, designed to prevent product backflow if a product line should become plugged.
Standards:	Bayco High Flow series swing check valves have 2", 3" or 4" connection choices: female NPT, round TTMA flange or square TTMA flange. All white EPDM & silicone seals are FDA compliant.
Materials:	Aluminum body and inspection lid, stainless-steel hardware, metal-to-metal, EPDM 250°F (121°C) or silicone seals 400°F (204°C) are available (seal availability is dependent upon the model, see chart below for more information).
Features & Benefits:	<ul style="list-style-type: none"> • Choice of seals: metal-to metal, Buna or silicone • Choice of connections female NPT, round TTMA flange or square TTMA flange • Flapper return springs are standard • Huck bolted flapper assembly prevents loose parts from contaminating the product • Inspection lids can be removed to facilitate routine flapper assembly inspections (system must not be in service during inspections or repair) • Complete repairs can easily be carried out on all high flow swing check valves without removing from the tank • When in use the flapper can swing completely out of the air path, resulting in improved air flow and subsequently increased product flow



3030SQ-SSP



3031TE



3031VIC



4040RD

Part #	Connection Type	Seal Type	Flapper Return Springs ?	Overall Length
Female NPT				
3020TE	2" female NPT both ends	white EPDM seal	yes	5 1/8"
3030TE-SSP	3" female NPT both ends	white silicone seal	yes	7 1/8"
3031TE	3" female NPT both ends	metal-to-metal seal	yes	7 1/8"
4040TE	4" female NPT both ends	white EPDM seal	yes	9"
4041TE	4" female NPT both ends	metal-to-metal seal	yes	9"
4042TE	4" female NPT both ends	white silicone seal	yes	9"
Square TTMA Flange				
3020SQ	2" square TTMA flange	white EPDM seal	yes	5 1/8"
3030SQ-SSP	3" square TTMA flange	white silicone seal	yes	6 7/8"
3031SQ	3" square TTMA flange	metal-to-metal seal	yes	6 7/8"
Round TTMA Flange				
3030RD-SSP	3" round TTMA flange	white silicone seal	yes	6 7/8"
3031RD	3" round TTMA flange	metal-to-metal seal	yes	6 7/8"
4040RD	4" round TTMA flange	white EPDM seal	yes	9"
4041RD	4" round TTMA flange	metal-to-metal seal	yes	9"
4042RD	4" round TTMA flange	white silicone seal	yes	9"
Grooved Pipe				
3030VIC-SSP	3" grooved end both ends	white silicone seal	yes	8"
3031VIC	3" grooved end both ends	metal-to-metal seal	yes	8"

- See pages 31, 32, 33 for repair kits and replacement parts
- See page 9 for TTMA flange gaskets

Product instruction sheets and technical data, can be viewed at dixonvalve.com