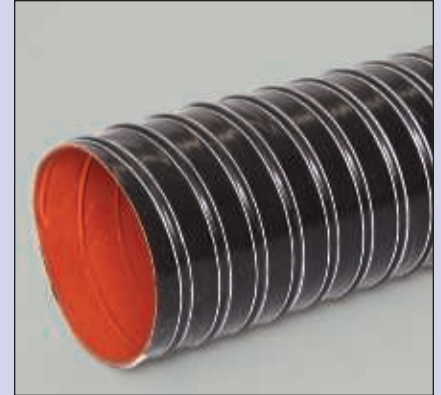


## NS



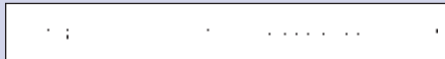
Size Range (In) ..... 1" to 12"  
 Standard Length (Ft) ..... 12'  
 Standard Color ..... iron oxide red inner layer  
 black outer layer  
 Temperature Range (°F) ..... -65° to 550°

- Double-ply fabric hose with a silicone coated fiberglass inner layer and a silicone coated Nomex® outer layer reinforced with a spring steel wire helix and external filament fiberglass cord
- Nomex® material increases flex life and abrasion resistance
- Suited for high temperature air handling applications
- The narrow pitch allows for tight bending radius while maintaining a smooth air flow
- Ideal for applications where constant flexing is involved
- Non-kinking
- Resistant to many oils and solvents, ozone, water, fungus and alkalis



**A F**

## GN



Size Range (In) ..... 1" to 12"  
 Standard Length (Ft) ..... 12'  
 Standard Color ..... black  
 Temperature Range (°F) ..... -40° to 300°

- Double-ply neoprene coated fiberglass fabric hose reinforced with a spring steel wire helix and external filament fiberglass cord
- Offers higher temperature characteristics than traditional neoprene hoses
- The narrow pitch allows for tight bending radius while maintaining a smooth air flow
- Flame retardant to UL 94V-0
- Non-kinking
- Not recommended for continuous flexing



**A F**

## Flex-Vest®



Size Range (In) ..... 1" to 6"  
 ..... custom to 8"  
 Standard Length (Ft) ..... 12'  
 ..... custom to 25'  
 Standard Color ..... iron oxide red inner layer  
 black outer layer  
 Temperature Range (°F) -65° to 550° inner layer  
 intermittent to 600°  
 -40° to 250° outer layer

- Inner Layer; Double-ply silicone coated fiberglass fabric hose reinforced with a spring steel wire helix
- Outer layer; Single-ply neoprene coated polyester fabric hose reinforced with a spring steel wire helix
- Insulation; 1-inch fiberglass insulation (R Value = 4)
- Insulated dryer hose
- Combines flexibility with minimal heat loss
- Suited for air handling applications at low positive and low negative pressures
- Good flexibility
- Excellent chemical resistance



**A**

## Raceflex®



Size Range (In) ..... 1.5" to 3"  
 ..... custom to 8"  
 Standard Length (Ft) ..... 12'  
 Standard Color ..... silver  
 Temperature Range (°F) ..... -65° to 625°

- Light weight laminate of fiberglass and vacuum metallized polyester film
- Heat reflective to 625°F
- Light weight and flexible
- Smooth bend radius
- 2.64-inch compression per foot of hose
- Designed for brake ducting and ventilation of drive compartments in racecars



**A F**

