

SQUALO35



SUBMERSIBLE PUMP FOR DEF

SQUALO35 is the most compact and top-performing **submersible pump specifically engineered for single-hose DEF applications.**

Thanks to its small size, it not only fits perfectly in the various sizes of DEF mini bulk tanks available in the market, but also conveniently in IBC totes!

**Dive into the PIUSI
universe with the
SQUALO35!**

PIUSI

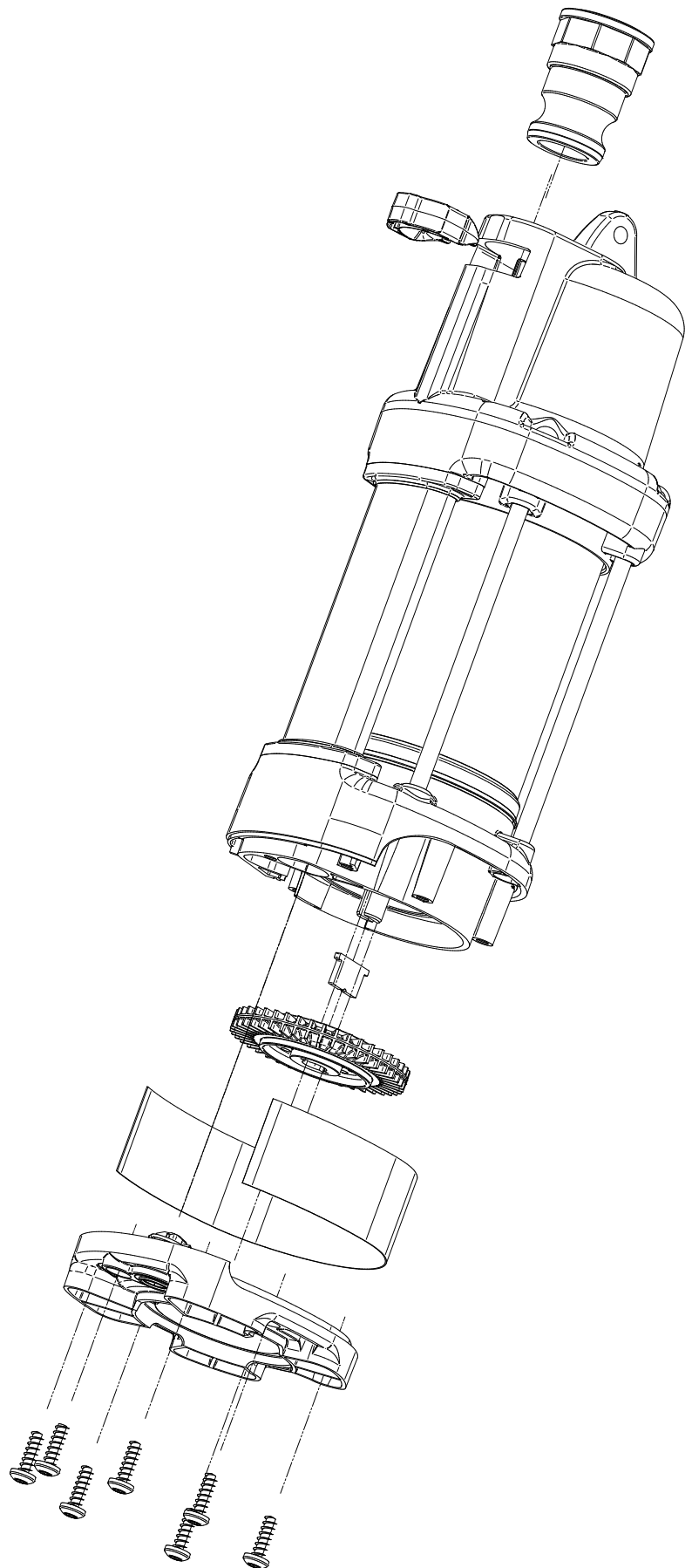
®

MADE IN ITALY

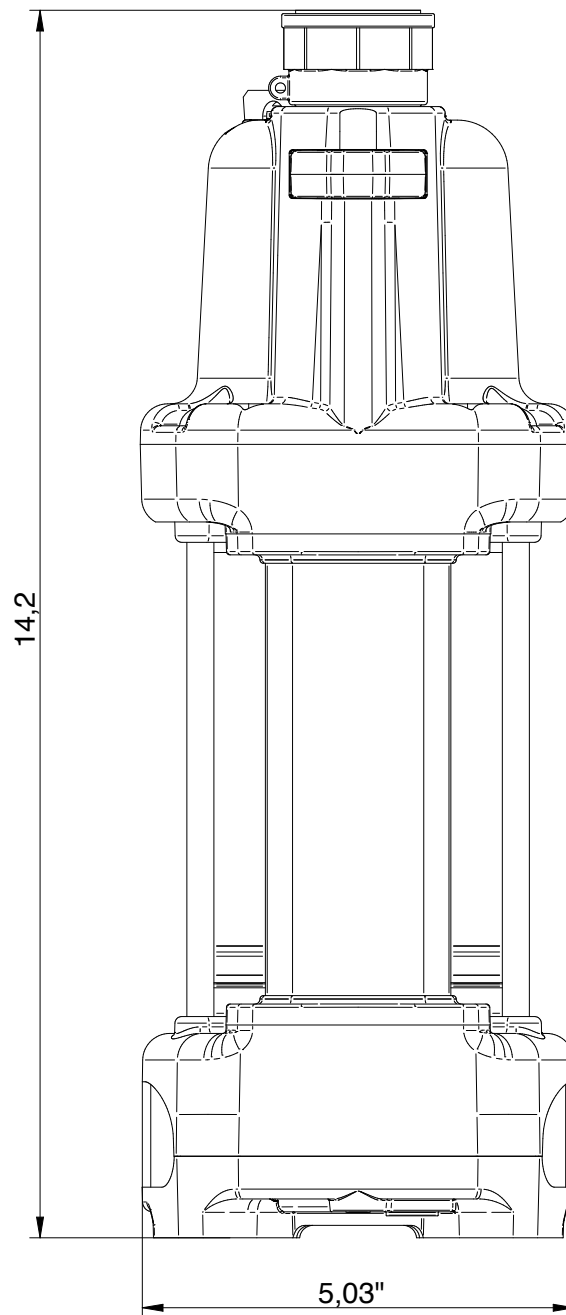
MAIN FEATURES

Manufactured with materials that comply with the ISO22241 directive, SQUALO35 is **the first submersible pump for DEF** specifically developed and tested for small and medium scale dispensing systems.

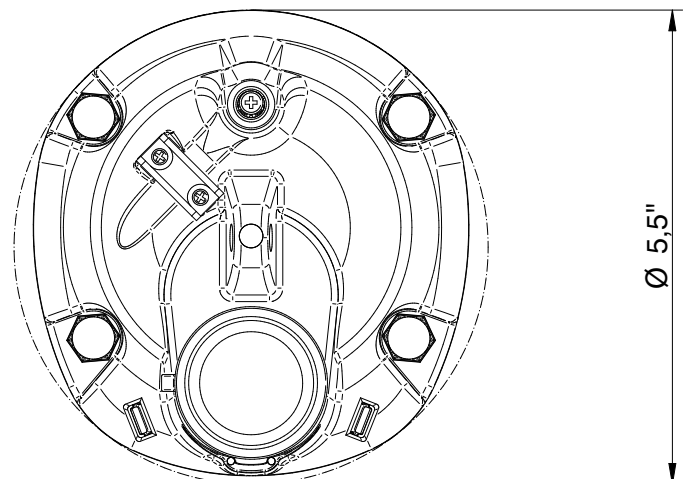
SQUALO35 is a centrifugal pump equipped with a **regenerative turbine, delivery check valve** and an innovative integrated pressure regulator system that optimizes performance in terms of flow-rate, flow consistency and precision; drastically reducing energy consumption (avoiding peak usage and consuming only the amount necessary for proper operation).



The reduced overall dimensions and special design of the pump guarantee an **easy installation** and suction clearance down to a 1/2" of fluid level – a near-empty tank. The pump is also equipped with a **timer for shutdown after 11 minutes** to protect against abuse and guarantee its longevity.



“ DID YOU KNOW?
IT IS ENGINEERED TO STAY ON THE BOTTOM OF THE TANK... OUR SQUALO IS THE SHARK OF DEF PUMPS: IN ITALIAN SQUALO MEANS SHARK! ”



TARGET USERS

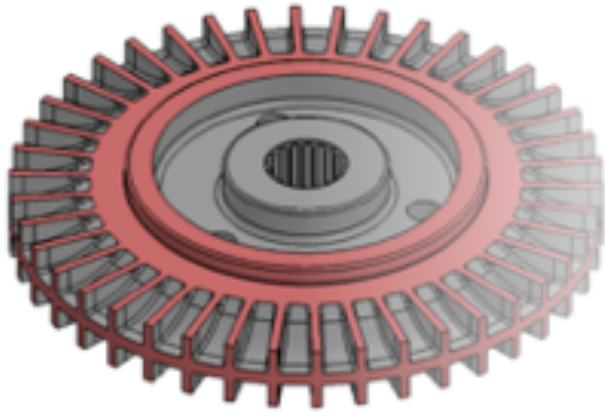
Compact, but powerful; the **SQUALO35** is suitable for DEF mini bulk tanks and IBC totes of any shape and size.

With a 14 - 1/4" height and 5.5" maximum diameter, this centrifugal pump is the ideal solution for those who need a **compact but powerful pump to ensure a safe, constant transfer of DEF over long distances** from the storage tank to the intended destination:

- all the single hose systems
- IBC totes
- Aboveground DEF mini bulk systems
- Fleets of all sectors.

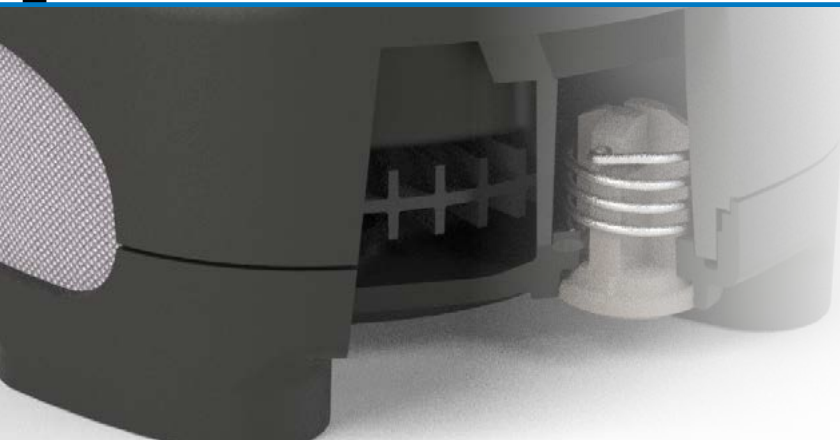


THE SECRET CORE OF THE SQUALO35



REGENERATIVE TURBINE

SQUALO35 has a **technologically-innovative core**: a regenerative turbine with delivery check valve, 2-pole induction motor with thermal protection; all encapsulated in a watertight shell.



INTEGRATED BY-PASS VALVE

SQUALO35 operates with an **almost-constant max flow rate up to 10 gal/min**; guaranteeing the same DEF flow with any type of component installed in the system.



FILTER

A **stainless-steel filter** strainer protects the pump from any potential particulates in the fluid.



NON-RETURN VALVE

The **non-return valve**, installed on the suction hose on the discharge end of the pump, allows the flow to move in one direction preventing back-flow.

PERFORMANCE

- **FLOW-RATE:**
10 GPM
- **DEAD LEVEL :**
30 MM (suction level) 1 - 1/4"
- **HEAD PRESSURE:**
25
- **MAX SYSTEM PRESSURE:**
29 PSI
- **POWER:**
1/2 HP
- **POWER SUPPLY:**
120V/60Hz
- **WORKING TEMPERATURE:**
12° F - 104 ° F
- **DIMENSIONS:**
Ø = 5.5"; height = 14 - 1/4"
- **REVOLVING HYDRAULIC CONNECTION**
1" BSP (female)
- **SUPPLIED WITH**
3/4" hoesetail



RELATED PRODUCTS



FOO41001A

FOO42000A

TURBINOX

Stainless steel turbine pulse meter suitable for transferring DEF. Its sturdy structure guarantees a long-lasting resistance and makes this meter perfect for plant installations.

Flow-rate: up to 10 GPM

Accuracy: $\pm 1\%$

Operating pressure: 290 PSI



FOO40721B

K24 FOR DEF

Patented turbine meter. Its compact design, accuracy and ease of use makes this flow meter an excellent DEF measuring device. It is equipped with a compact and easily readable display that can be rotated in four different positions.

Flow-rate: up to 26 GPM

Accuracy: $\pm 1\%$

Operating pressure: 145 PSI



FOO61701A

FOO61700A

SB325_X METER / SB325_X

Due to their features and materials, these nozzles are extremely light, ergonomic and rugged; suitable for **use in the toughest conditions**. Body, lever, spout and break-away system display the robustness you expect from a professional system.

Flow-rate: up to 12 GPM

Accuracy: $\pm 1\%$

Operating pressure: 50 PSI



Follow us:

@piusiofficial

