


Fuel Tanker Loading and Unloading

TTMA Flanged Sight Flow Indicators

Features & Benefits:

- Due to the proprietary blending of petroleum products, Dixon® recommends that the thermoplastic tubing and the gaskets be immersion tested in the product to be handled to ensure compatibility (not compatible with crude oil) 
- Durable cast aluminum housing replaces competitions all acrylic sight glass commonly found on tank trucks
- Allows for visual identification of the fuel grade prior to opening the valve
- Works with tank truck flanged butterfly valves found on gasoline trucks
- Low cost sight glass tube can be easily replaced
- Rated to **150 PSI**



5200-SFI shown mounted on petroleum tank



5200-SFI



5200-SPC

Part #	Description	Fuel Compatibility
5200-SFI-3	3" TTMA flange sight flow, 1¾" width, 3½" inside diameter	Gasoline and diesel, up to E100 and B100 biofuels
5200C-SFI-3¹	3" TTMA flange sight flow, 1¾" width, 3½" inside diameter, stainless retain ring	Gasoline and diesel, up to E100 and B100 biofuels, crude oil
5200-SFI	4" TTMA flange sight flow, 1¾" width, 4⅝" inside diameter	Gasoline and diesel, up to E100 and B100 biofuels
5200-SFIV	4" TTMA flange sight flow, 1¾" width, 4⅝" inside diameter, FKM seals	
5200C-SFI¹	4" TTMA flange sight flow, 1¾" width, 4⅝" inside diameter, stainless retain ring	Gasoline and diesel up to E100 and B100 biofuels, crude oil
5200-SPC	4" aluminum TTMA pattern solid flanged spacer (no sight glass)	All fuels

NEW

¹ Compatible with crude oil


Note: Maximum flange bolt torque is 200 in-lb (inch pounds) 

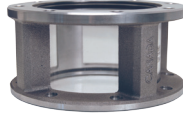
See page 87 for sight glass repair kits

Fuel Tanker

TTMA Flanged Sight Flow Indicators


Features & Benefits:

- Due to the proprietary blending of petroleum products, Dixon® recommends that the thermoplastic tubing and the gaskets be immersion tested in the product to be handled to ensure compatibility (not compatible with crude oil) 
- Allows for visual identification of the fuel grade prior to opening the valve
- Works with tank truck flanged butterfly valves found on gasoline trucks
- Larger ID 4^{3⁄8}" flow indicator allows tank truck flanged butterfly valves to connect to either end of the indicator
- Maximum working pressure: **150 PSI**, TTMA flanges: **100 PSI**



5201-SFI

Part #	Description	Fuel Compatibility
5201-SFI	4" TTMA flange sight flow, 3 ¹ / ₄ " width, 4 ³ / ₈ " inside diameter	Gasoline and diesel, up to E100 and B100 biofuels
5201-SFI-3	3" TTMA flange sight flow, 3 ¹ / ₄ " width, 3 ¹ / ₂ " inside diameter	

Note: Maximum flange bolt torque is 200 in-lb (inch pounds) 



5201-CA

Part #	Description	Fuel Compatibility
5201CA	4" hose inline sight glass with 4" cam & groove adapter x coupler	Gasoline and diesel, up to E100 and B100 biofuels
5201CA-3	3" sight flow indicator 3" coupler x 3" adapter	
5201CC	sight flow indicator 4" coupler x 4" coupler	

See page 87 for sight glass repair kits.

Product Indicators

Features & Benefits:

- weight: 1¹/₂ lbs
- dimensions: 8" x 3" x 2¹/₂" (L x W x H)
- capable of displaying 8 user selectable product identification labels
- can be mounted in typical locations near API with standard bolt hole pattern
- customizable label sheets are sold in packs of 10.

Material:

- polished cast aluminum



DBPI080



DBPI080-MINI

Part #	Description
DBPI080	petroleum product indicator (includes empty, ethanol, diesel, U.L.S.D., reg unleaded, plus unleaded, premium unleaded, jet fuel)
DBPI080L	petroleum product indicator, left handed, dual knob
40462VY	product indicator base label
DBPI080-MINI	mini petroleum product indicator, 4.5" x 2.125" x 2.25" , wt 10 oz .