

Fuel Tanker Overfill Detection

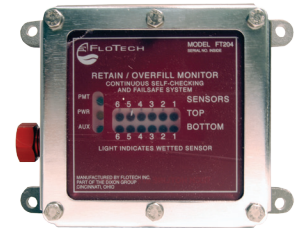
FloTech™ ROM Type Overfill/Retain (Red & Black 2 Wire) System Replacement Parts

ROM Type Onboard Monitors

<p>Features & Benefits:</p>	<ul style="list-style-type: none"> • Easy to follow programming guide for up to six compartments top only or top and bottom service with the same monitor • Monitor can be programmed up to 100,000 times without sending it back to the factory. • As the monitor is programmed for the number of compartments, terminators are not required. • Stainless steel terminal blocks resist rusting of contacts • Stainless steel hardware is used on all products • Powder coated color matched components for exceptional appearance • Auxiliary input • Wide input power 12-24 VDC • Drop-in compatibility with competitors products, see compatibility chart on pages 68 - 71. • Monitors include advanced diagnostic capabilities as well as signal translation abilities for all socket types (optic, thermistor or float). The system offers true load at any rack compatibility.
--	--

Part #	Description
FT204P	FloTech™ ROM type programmable monitor and housing.
FT203P	FloTech™ ROM type programmable replacement monitor only (no housing)
FT203P-SPEC	FloTech™ ROM type programmable replacement monitor with 8-hole cover (no housing or frame)

See page 152 for repair kits and replacement parts.

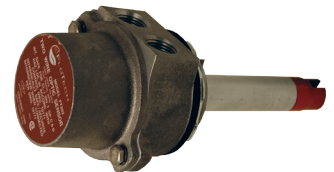


FT204P

Overfill Detection Sensors

<p>Features & Benefits:</p>	<ul style="list-style-type: none"> • Overfill detection sensors are intended to detect a pending overfill condition inside the fuel tank compartment. When they are wetted (come in contact with the fuel) they signal the fuel loading rack to close the fuel supply control valve, to prevent a spill of product. • The FloTech™ optic 2 wire probe is electronically and mechanically compatible for drop-in replacement of other commonly used 2-wire probes with red and black wires, such as the Civacon ROM system. • All FloTech™ brand probes are trouble free probes they come with a unique dual elastomer seal for the glass optic prisms. The elastomer seals are flexible allowing thermal expansion and resistance to steam cleaning and temperature changes, along with resistance to petroleum chemical attack. The replacement probes have a smooth tapered tip design for easy replacement installation into the sensor housing without gasket damage. • Custom probe lengths available upon request • The sensor housing contains a red and black 2 wire probe, in a cast aluminum housing. The sensor housing has a 2" NPT mounting thread, heavy duty stainless steel hardware, and FKM probe seal. Install into either a 2" NPT threaded port or 2 3/8" diameter tank opening using the gasket and locking nut provided. All screws and rings are heavy duty stainless steel for easy assembly and long life.
--	---

Part #	Description	Replacement Probes
FT202	Housing with 7" red and black 2 wire overfill detection probe	FT201
FT202-12	Housing with 12" red and black 2 wire overfill detection probe	FT201-12
FT202-18	Housing with 18" red and black 2 wire overfill detection probe	FT201-18



FT202

See page 151 for repair kits and replacement parts.
Please refer to chart on pages 70 thru 73 for cross references to other manufacturer part numbers.