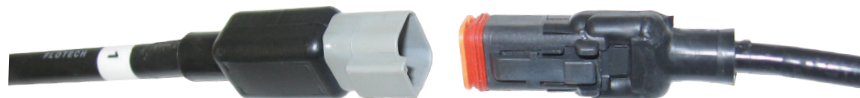


Fuel Tanker Overfill Detection

FloTech™ Checkmate Overfill/Retain Plug-n-Play System



Application:	The reason for many overfill system breakdowns is failed or poor wiring connections. The required amperage within the overfill system is so low that any poorly wired or corroded wiring connections tend to fail (the low current cannot pass through corrosion or poor connections). To remove the possibility of wiring system problems, Dixon® has introduced the FloTech™ Plug-n-Play system, all the wire connections are prewired and tested at the factory using high quality weather proof cables and plugs. Plug-n-Play system installation takes a fraction of the time to install when compared to conventional systems, just mount all the components and simply plug them all together.
Standards:	Manufactured to American Petroleum Institute standard API RP-1004, which allows for interchangeability.
Materials:	Dependent upon the component, see each product section for materials
Features & Benefits:	<ul style="list-style-type: none"> • Prewired cables and plugs on sensors, wiring harnesses, onboard monitor and sockets, make it simple to install our Plug-n-Play system in much less time than conventional systems. • Secure and weather tight connections all the time remove the possibility of poor wiring connections. Sealed connectors pass IP67 and DIN40050 salt spray tests. • Easy installation: literally Plug-n-Play, just mount the components and plug them all together. • Biofuel compatible up to E100 (100% Ethanol) and B100 (100% bio diesel)

Overfill Products

Monitors with Integrated Dual Sockets

Features & Benefits:	<ul style="list-style-type: none"> • Integrated Optic and Thermistor dual sockets with onboard monitor all in one aluminum case • Takes less space than utilizing separate sockets and monitor • Prewired and factory tested with Plug-n-Play cabling and plugs, eliminates hours of manual crimped wire connections and removes the problems and worries associated with connection problems. • Includes water-tight integrated fuse holder, all stainless steel hardware and terminal blocks prevent corrosion • Built-in configurable high current relay output for pump or signal control • Color coded display shows well on trailers • Sockets come standard with FloTech™ unique guaranteed for life stainless steel wear rings. <p>Available Integrated Options:</p> <ul style="list-style-type: none"> • Top (overfill) only monitoring, or both top (overfill) and bottom (retain) monitoring • Pre-wired ground bolt • Pre-wired pressure sensor which can be used to interlock brakes or vapor vents • Pre-wired Trailer Identification Module • Pre-wired dual male pin power cord
---------------------------------	--



Part #	Plug-n-Play Connections		Available Accessories Installed					Sockets	
	Top Overfill Detection	Bottom Retain Detection	Ground Bolt	Pressure Sensor Switch	Trailer ID Module	Dual Male Pin - Power Cord	Stainless Steel 'Guaranteed for Life' Wear Rings	Optic	Thermistor
FT208-390							✓	6 contact pins, 3 J-slots	10 contact pins, 4 J-slots
FT208-390G			✓				✓		
FT208-390GS			✓	✓			✓		
FT208-390GST			✓	✓	✓		✓		
FT208-390GT			✓		✓		✓		

Product instruction sheets and technical data can be viewed on our website at dixonvalve.com

Biofuel Compatible

Fuel Tanker Overfill Detection

FloTech™ Checkmate Overfill/Retain Plug-n-Play System Monitors with Integrated Dual Sockets (continued)



Part #	Plug-n-Play Connections		Available Accessories Installed					Sockets	
	Top Overfill Detection	Bottom Retain Detection	Ground Bolt	Pressure Sensor Switch	Trailer ID Module	Dual Male Pin - Power Cord	Stainless Steel 'Guaranteed for Life' Wear Rings	Optic	Thermistor
FT208-390P	✓						✓	6 contact pins, 3 J-slots	10 contact pins, 4 J-slots
FT208-390PG	✓		✓				✓		
FT208-390PGS	✓		✓	✓			✓		
FT208-390PGST	✓		✓	✓	✓		✓		
FT208-390PGT	✓		✓		✓		✓		
FT208-390PGSO	✓		✓	✓		✓	✓		
FT208-390PGSTO	✓		✓	✓	✓	✓	✓		
FT208-390PP	✓	✓					✓		
FT208-390PPG	✓	✓	✓				✓		
FT208-390PPGS	✓	✓	✓	✓			✓		
FT208-390PPGST	✓	✓	✓	✓	✓		✓		
FT208-390PPGT	✓	✓	✓		✓		✓		
FT208-390PPGSO	✓	✓	✓	✓		✓	✓		
FT208-390PPGSTO	✓	✓	✓	✓	✓	✓	✓		
FT208-391P	✓						✓	6 contact pins, 4 J-slots	10 contact pins 4 J-slots
FT208-391PG	✓		✓				✓		
FT208-391PGS	✓		✓	✓			✓		
FT208-391PGST	✓		✓	✓	✓		✓		
FT208-391PGT	✓		✓		✓		✓		
FT208-391PP	✓	✓					✓		
FT208-391PPG	✓	✓	✓				✓		
FT208-391PPGS	✓	✓	✓	✓			✓		
FT208-391PPGST	✓	✓	✓	✓	✓		✓		
FT208-391PPGT	✓	✓	✓		✓		✓		

See pages 138 and 139 for repair kits and replacement parts.

Product instruction sheets and technical data can be viewed on our website at dixonvalve.com



Biofuel Compatible