

# Dry Disconnects

## Jump Size Female NPT Adapters

Female NPT Size	Adapter Size	Dry Disconnect Body Size	Seal Material	Max PSI @ 70°F (21°C)	Zinc/Aluminum Part #	Competitor Part #
2"	2"	1½"	Buna	150	<b>DBA11-1520</b>	-
2"	2"	1½"	FKM	150	<b>DBA12-1520</b>	-

See pages 108 for replacement parts.



DBA12-1520

## Female NPS Vapor Adapter

Female NPSM Size	Adapter Size	Dry Disconnect Body Size	Seal Material	Max PSI @ 70°F (21°C)	Stainless Steel Part #	Competitor Part #
3"	2½"	2"	PTFE	150	<b>DBAV73-2030</b>	2173AVN

See page 110 for replacement parts.



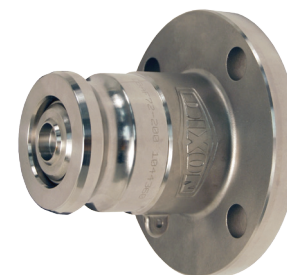
DBAV73-2030

## 150# Flange Adapters

Flange Size	Adapter Size	Dry Disconnect Body Size	Seal Material	Max PSI @ 70°F (21°C)	Stainless Steel Part #	Competitor Part #
2"	2"	1½"	Buna	150	<b>DBAF71-1520</b>	1671ANF-SS15
2"	2½"	2"	Buna	150	<b>DBAF71-200</b>	1671ANF-SS20
3"	4"	3"	Buna	120	<b>DBAF71-300</b>	1671ANF-SS30
2"	2"	1½"	FKM	150	<b>DBAF72-1520</b>	1672ANF-SS15
2"	2½"	2"	FKM	150	<b>DBAF72-200</b>	1672ANF-SS20
3"	4"	3"	FKM	120	<b>DBAF72-300</b>	1672ANF-SS30
2"	2"	1½"	PTFE encapsulated silicone	150	<b>DBAF73-1520</b>	1673ANF-SS15
2"	2½"	2"	PTFE encapsulated silicone	150	<b>DBAF73-200</b>	1673ANF-SS20
3"	4"	3"	PTFE encapsulated silicone	120	<b>DBAF73-300</b>	1673ANF-SS30
2"	2"	1½"	EPDM	150	<b>DBAF74-1520</b>	1674ANF-SS15
2"	2½"	2"	EPDM	150	<b>DBAF74-200</b>	1674ANF-SS20
3"	4"	3"	EPDM	120	<b>DBAF74-300</b>	1674ANF-SS30
2"	2"	1½"	FFKM	150	<b>DBAF76-1520</b>	1676ANF-SS15
2"	2½"	2"	FFKM	150	<b>DBAF76-200</b>	1676ANF-SS20
3"	4"	3"	FFKM	120	<b>DBAF76-300</b>	1676ANF-SS30
2"	2½"	2"	FKM-GFLT	150	<b>DBAF78-200</b>	---

Note: Stainless steel corrosion resistance is comparable to 304 stainless steel.

See page 109 for replacement parts.



DBAF72-200

Product instruction sheets and technical data can be viewed on our website at [dixonvalve.com](http://dixonvalve.com)