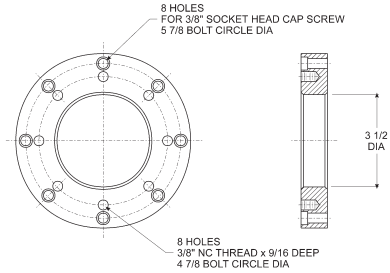


Fuel Tanker

TTMA Flange Reducer



4443

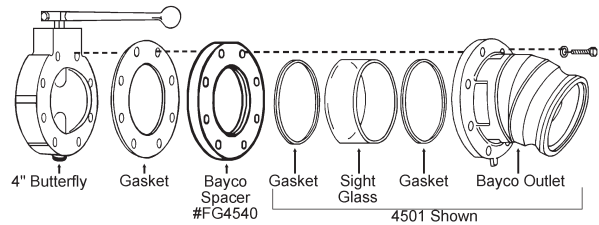


Part #	Description	Fuel Compatibility
4443	4" TTMA x 3" TTMA reducer flange	Gasoline and diesel, up to E100 and B100 biofuels

TTMA Butterfly Valve Spacer



FG4540



Part #	Description	Fuel Compatibility
FG4540	4" TTMA flange spacer	Gasoline and diesel, up to E100 and B100 biofuels

API and TTMA Flange Gaskets



Part #	Size	Description	OD	ID	Thickness	Bolt Circle	Fuel Compatibility
300GTTFCB	3"	TTMA - Cork/Buna	5-5/8"	3 1/2"	1/8"	4-7/8"	Gasoline and diesel, up to E10 and B2 biofuels
300GTTFBL	3"	TTMA - Baylast™	5-5/8"	3-5/8"	1/8"	4-7/8"	
300GTTFK	3"	TTMA Klinger nylon	5-5/8"	3 1/2"	1/8"	4-7/8"	
40321TF	3"	TTMA - PTFE with soft fiber core	5-29/32"	3 1/2"	3/32"	4-7/8"	Gasoline and diesel, up to E100 and B100 biofuels
40364TF	3"	API Sump - PTFE with soft fiber core	7 1/4"	5"	5/32"	6 1/4"	
40364BL	3"	API Sump - Baylast™	7 1/4"	5"	1/8"	6 1/4"	
400GTTFCB	4"	TTMA - Cork/Buna	6-5/8"	4-9/16"	1/8"	5-7/8"	Gasoline and diesel, up to E10 and B2 biofuels
400GTTFBL	4"	TTMA - Baylast™	6-5/8"	4-5/8"	1/8"	5-7/8"	
400GTTFK	4"	TTMA Klinger nylon	6-5/8"	4-9/16"	1/8"	5-7/8"	
40322TF	4"	TTMA - PTFE with soft fiber core	6-7/8"	4-5/8"	3/32"	5-7/8"	Gasoline and diesel, up to E100 and B100 biofuels
40323TF	4"	API Sump - PTFE with soft fiber core	8-3/8"	5-7/8"	5/32"	7 1/4"	
40323BL	4"	API Sump - Baylast™	8 1/4"	6 5/8"	1/8"	7 1/4"	