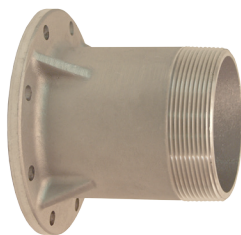


Fuel Tanker

TTMA Flanges



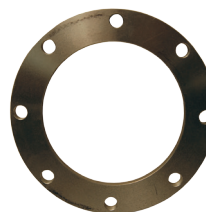
TTF4AL-4MT



TTF4AL-4EMT



TTF4AL-4FT



TTF4AL



TTF400SP

Part #	Description	Fuel Compatibility
TTF3AL-3MT	3" TTMA flange x 3" male NPT, 2½" overall length	Gasoline and diesel, up to E100 and B100 biofuels
TTF4AL-3MT	4" TTMA flange x 3" male NPT, 2½" overall length	
TTF4ALHC-3MT	4" TTMA flange x 3" male NPT, 2½" overall length, hardcoated	
TTF4AL-3EMT	4" TTMA flange x 3" male NPT, 5½" overall length	
TTF4AL-3FT	4" TTMA flange x 3" female NPT, 2½" overall length	
TTF4AL-4MT	4" TTMA flange x 4" male NPT, 2½" overall length	
TTF4ALHC-4MT	4" TTMA flange x 4" male NPT, 2½" overall length, hardcoated	
TTF4AL-4EMT	4" TTMA flange x 4" male NPT, 5½" overall length	
TTF4AL-4FT	4" TTMA flange x 4" female NPT, 2½" overall length	
TTF3AL	3" TTMA butt weld on flange	
TTF4AL	4" TTMA butt weld on flange	
TTF300SP	3" TTMA socket weld on flange	
TTF400SP	4" TTMA socket weld on flange	

Cam and Groove x TTMA Flanges



400-ALT-AL



4022ALTAL



400-DLT-AL



4022DLTAL

Part #	Description	Fuel Compatibility
300-ALT-AL	3" cam and groove adapter (straight) x 3" TTMA flange	Gasoline and diesel, up to E100 and B100 biofuels
3040ALTAL	3" cam and groove adapter (straight) x 4" TTMA flange	
400-ALT-AL	4" cam and groove adapter (straight) x 4" TTMA flange	
40022ALTAL	4" cam and groove adapter (22½°) x 4" TTMA flange	
600-ALT-AL	6" cam and groove adapter (straight) x 6" TTMA flange	
300-DLT-AL	3" cam and groove coupler (straight) x 3" TTMA flange	Gasoline and diesel, up to E85 and B20 biofuels
3040DLTAL	3" cam and groove coupler x 4" round tank truck flange	
400-DLT-AL	4" cam and groove coupler (straight) x 4" TTMA flange	
40022DLTAL	4" cam and groove coupler (22½°) x 4" TTMA flange	
600-DLT-AL	6" cam and groove coupler (straight) x 6" TTMA flange	