


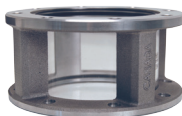
Fuel Tanker

Petroleum Products

TTMA Flanged Sight Flow Indicators

Features & Benefits:

- Due to the proprietary blending of petroleum products, Dixon® recommends that the thermoplastic tubing and the gaskets be immersion tested in the product to be handled to ensure compatibility (not compatible with crude oil) 
- Allows for visual identification of the fuel grade prior to opening the valve
- Works with tank truck flanged butterfly valves found on gasoline trucks
- Larger ID 4^{3⁄8}" flow indicator allows tank truck flanged butterfly valves to connect to either end of the indicator
- Maximum working pressure: **150 PSI**, TTMA flanges: **100 PSI**



5201-SFI

Part #	Description	Fuel Compatibility
5201-SFI	4" TTMA flange sight flow, 3 ¹ / ₄ " width, 4 ³ / ₈ " inside diameter	Gasoline and diesel, up to E100 and B100 biofuels
5201-SFI-3	3" TTMA flange sight flow, 3 ¹ / ₄ " width, 3 ¹ / ₂ " inside diameter	

Note: Maximum flange bolt torque is 200 in-lb (inch pounds) 



5201-CA

Part #	Description	Fuel Compatibility
5201CA	4" hose inline sight glass with 4" cam & groove adapter x coupler	Gasoline and diesel, up to E100 and B100 biofuels
5201CA-3	3" sight flow indicator 3" coupler x 3" adapter	
5201CC	sight flow indicator 4" coupler x 4" coupler	

See page 87 for sight glass repair kits.

Product Indicators

Features & Benefits:

- weight: 1½ lbs
- dimensions: 8" x 3" x 2½" (L x W x H)
- capable of displaying 8 user selectable product identification labels
- can be mounted in typical locations near API with standard bolt hole pattern
- customizable label sheets are sold in packs of 10.

Material:

- polished cast aluminum



DBPI080



DBPI080-MINI

Part #	Description
DBPI080	petroleum product indicator (includes empty, ethanol, diesel, U.L.S.D., reg unleaded, plus unleaded, premium unleaded, jet fuel)
DBPI080L	petroleum product indicator, left handed, dual knob
40462VY	product indicator base label
DBPI080-MINI	mini petroleum product indicator, 4.5" x 2.125" x 2.25" , wt 10 oz .