

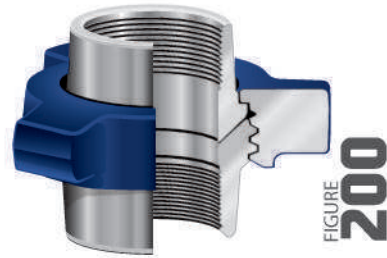
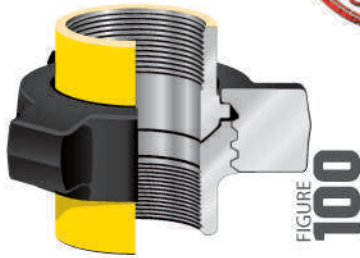
# PIPE COUPLINGS



# HAMMER UNION

**FIGURE 100 THREADED 1000 PSI CWP**

**FIGURE 200 THREADED 2000 PSI CWP**

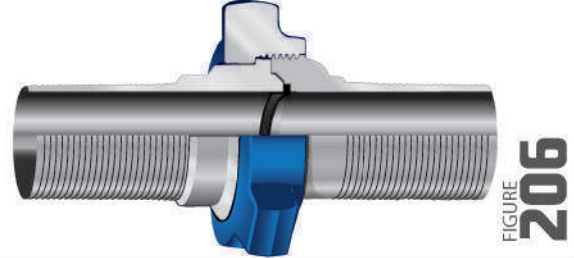
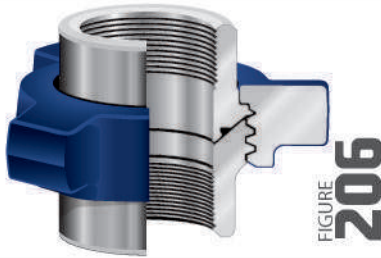


Size	1000 PSI CWP			
	Weight Each (lbs)	Standard Carton	Part #	List
1"	---	---	---	
2"	5.25	6	HU100-200T	
3"	12.65	5	HU100-300T	
4"	20.81	3	HU100-400T	
6"	46.20	1	HU100-600T	
8"	66.00	1	HU100-800T	

Size	2000 PSI CWP			
	Weight Each (lbs)	Standard Carton	Part #	List
1"	1.92	30	HU200-100T	
2"	5.00	12	HU200-200T	
3"	13.76	5	HU200-300T	
4"	21.59	3	HU200-400T	
6"	46.20	1	HU200-600T	
8"	66.00	1	HU200-800T	

**FIGURE 206 THREADED 2000 PSI CWP**

**FIGURE 206 SHANK 300 PSI CWP**

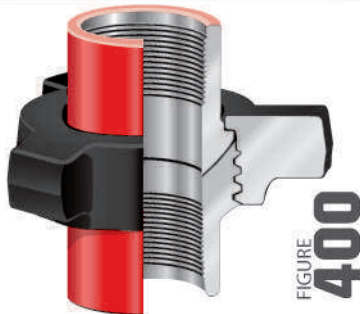


Size	2000 PSI CWP			
	Weight Each (lbs)	Standard Carton	Part #	List
1"	---	---	---	
2"	13.45	4	HU206-200T	
3"	22.93	4	HU206-300T	
4"	35.71	1	HU206-400T	
6"	35.71	1	HU206-600T	
8"	66.00	1	HU206-800T	

Size	2000 PSI CWP			
	Weight Each (lbs)	Standard Carton	Part #	List
1"	---	---	---	
2"	---	---	---	
3"	---	---	---	
4"	35.71	1	HU206-400S	
6"	---	---	---	
8"	---	---	---	

**FIGURE 400 THREADED 4000 PSI CWP**

**REPLACEMENT ELASTOMER SEALS**



Size	2000 PSI CWP			
	Weight Each (lbs)	Standard Carton	Part #	List
2"	5.00	12	HU400-200T	
3"	13.76	5	HU400-300T	
4"	21.59	3	HU400-400T	

Size	REPLACEMENT ELASTOMER SEALS			
	Weight Each (lbs)	Standard Carton	Part #	List
2"	5.25	4	HU-200ES	
3"	12.65	2	HU-300ES	
4"	20.81	2	HU-400ES	

PIPE FITTINGS/  
VALVES

