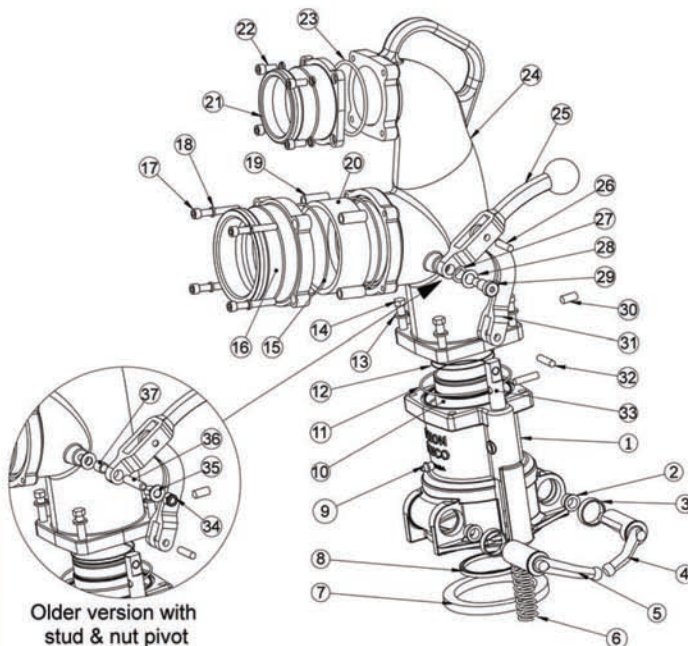


Fuel Delivery

6400 Series Co-axial Drop Elbow with 3" Male Vapor Outlet

6400 (4" male inlet), 6400F (4" female inlet), 6430 (3" male inlet), 6430F (3" female inlet)

Petroleum Replacement Parts



Bill of Materials

| Item # | Description | Part # | Qty |
|--------|-------------------------------|-------------------------------------|-----|
| 1 | bottom body | use kit 6230 or 6230X | 1 |
| 2 | small bushing | use kit 6400ARK | 2 |
| 3 | large bushing | use kit 6400ARK | 2 |
| 4 | right arm | use kit 6400ARK | 1 |
| 5 | left arm | use kit 6400ARK | 1 |
| 6 | stem spring | 112012 | 1 |
| 7 | main gasket | 6000-9 | 1 |
| 8 | tube U cup seal | U-CUP-2/75 | 1 |
| 9 | grease nipple | NIPPLE/1 | 1 |
| 10 | tube | use kit 6400DTK | 1 |
| 11 | O-ring | AS156 | 1 |
| 12 | tube O-ring | O-RING#39 | 2 |
| 13 | lock washer | use kit 6000EHK | 4 |
| 14 | bolt | use kit 6000EHK | 4 |
| 15 | inlet O-ring | AS156 | 2 |
| 16A | 4" adapter fuel inlet (6400) | use kit 6000-17C | 1 |
| 16B | 4" coupler fuel inlet (6400F) | use kit 6000-14C | 1 |
| 16C | 3" adapter fuel inlet (6430) | use kit 6000-16C | 1 |
| 16D | 3" coupler fuel inlet (6430F) | use kit 6000-15C | 1 |
| 17 | inlet bolt | SC5/16-18X2.5P | 4 |
| 18 | inlet bolt lock washer | 111723 | 4 |
| 19 | inlet bolt spacer | 6544CA-1 | 4 |
| 20 | sight glass | use kit 6400SGK | 1 |
| 21A | 3" adapter vapor outlet | 6400-4 | 1 |
| 21B | 3" male NPT vapor outlet | 6000-26C | 1 |
| 22 | vapor adapter bolt | 4432 | 4 |
| 23 | vapor adapter O-ring | 110601 | 1 |
| 24 | top co-axial elbow body | 6400-1 | 1 |
| 25 | handle | use kit 6200-15ASSM | 1 |
| 26 | handle pin | PIN5/16X 1 1/4-P | 1 |
| 27 | wave washer ¹ | use kit 6200SBK ¹ | 1 |
| 28 | SS flat washer ¹ | use kit 6200SBK ¹ | 1 |
| 29 | shoulder bolt ¹ | use kit 6200SBK ¹ | 1 |
| 30 | set screw | SC3/8NCX1/2 | 1 |
| 31 | linkage | use kit 6200-15ASSM | 1 |
| 32 | stem pin | PIN5/16X 1 1/4-P | 1 |
| 33A | lever stem (standard) | 6200-7 | 1 |
| 33B | lever stem (tall) | 6200-7X | 1 |
| 34 | pivot lock nut ² | use kit 6200SHK ² | 1 |
| 35 | washer ² | use kit 6200SHK ² | 2 |
| 36 | pivot stud ² | use kit 6200SHK ² | 1 |
| 37 | pivot bushing ² | use kit 6200SHK ² | 1 |

¹ items 27, 28 & 29 are for the newer version with a shoulder bolt pivot only.
² for the older version with stud and nut pivot, use items 34 through 37 instead.

Repair Kits

| Part # | Description | Includes Item # |
|----------------------------|--|---------------------|
| 6230 | complete standard replacement bottom unit | 1-7, 9, 11, 32, 33A |
| 6230X | complete tall replacement bottom unit | 1-7, 9, 11, 32, 33B |
| 6400ARK | replacement L & R arms, main gasket, O-rings, small & large bushings | 2-5, 7, 8, 11, 12 |
| 6200BK | replacement small & large bushings | 2, 3 |
| 6400SGK | replacement sight glass and seal | 15, 20 |
| 6200-15ASSM | replacement handle, lever and pin | 25, 26, 31 |
| 6000EHK | replacement bolts and washers | 13, 14 |
| 6400DTK | replacement tube, O-ring & U cup seal | 8, 10, 12 |
| 6200SHK² | replacement pivot stud, bushing, washer and lock nut | 34-37 |
| 6200SBK¹ | replacement shoulder bolt pivot, wave washer and flat washer | 27-29 |

Inlet Adapter and Coupler Kits

| Part # | Description | Includes Item # |
|-----------------|--------------------------|-----------------|
| 6000-14C | 4" coupler inlet kit | 16B, 17, 18 |
| 6000-15C | 3" coupler inlet kit | 16D, 17, 18 |
| 6000-16C | 4" adapter inlet kit | 16A, 17, 18 |
| 6000-17C | 3" adapter inlet kit | 16C, 17, 18 |
| 6000-26C | 3" male NPT vapor outlet | 21B |

Product instruction sheets and technical data can be viewed on our website at dixonbayco.com by selecting the "Resources" menu